



Columbia

Product Catalogue



FAMILY VALUES

STRENGTH. HEART. INTEGRITY.

When you buy from Columbia you are doing more than making a smart purchase, you are joining the Columbia customer family. We are a family-oriented company with the kind of heart that distinguishes a champion from a challenger. Our values are as strong as our tools and our commitment to our customers is even greater. We get our hands dirty every day and search for excellence in everything we do to give you the best experience possible.

If you own or choose to own Columbia,
WELCOME TO THE FAMILY!

GET SOCIAL:
@columbiatools

TOOL INDEX

- 03 TAPERS
- 05 CORNER ROLLERS
- 06 OUTSIDE CORNER ROLLERS
- 07 ANGLE HEADS
- 08 CORNER FLUSHER BOXES
- 09 FLAT BOXES
- 11 NAIL SPOTTERS
- 12 MUD PUMPS
- 13 COLUMBIA ONE
- 14 BOX HANDLES
- 15 SEMI AUTOMATIC TOOLS
- 18 MAINTENANCE KITS



WHY COLUMBIA?

We do everything ourselves, in-house, right here in North America. Our tools are designed, manufactured and assembled with pride under one roof. What does this mean to you? The best possible experience. The power of knowing that you are only one call away from getting what you need faster, more efficiently and consistently. Our customers love the fact that we respond to their needs with the highest quality tools and the best support.

AUTOMATIC TAPER

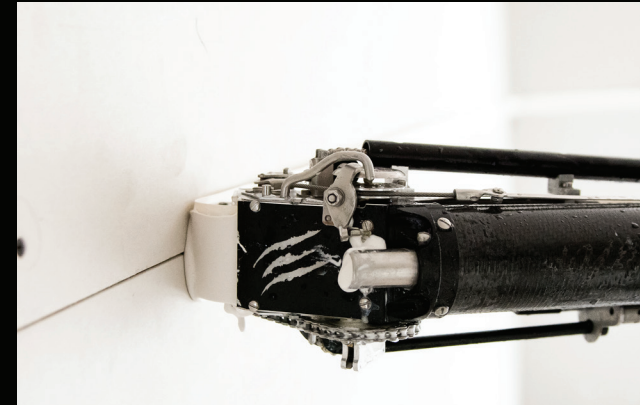
We have been perfecting our Automatic Taper for over 30 years. The results of our superior engineering, craftsmanship, and service are proven daily among the world's top commercial and residential drywall contractors. Our Taper has been specifically designed to run at peak performance in the most demanding commercial environments where daily punishment and abuse are run of the mill. When you are tired of compromising, step into a Columbia Taper.

Our Carbon Fiber Predator is the latest innovation out of the Columbia workshop. The lightest, but most durable taper on the market, the Predator is the next generation of top notch drywall tools.

Item No.	Description
TAPER	Columbia Automatic Taper (53" length)
PTAPER	Columbia Predator (Carbon Fiber Taper)



GET SOCIAL:
@columbiatools



The 6 wheel cutting system is amazingly smooth and the carbon fiber tubing maintains its temperature even in extreme weather

Our carbon fiber taper is not only the lightest on the market, it is also the strongest and most durable as well

Quick release removal
makes cleaning the head
and changing the cables
fast and easy



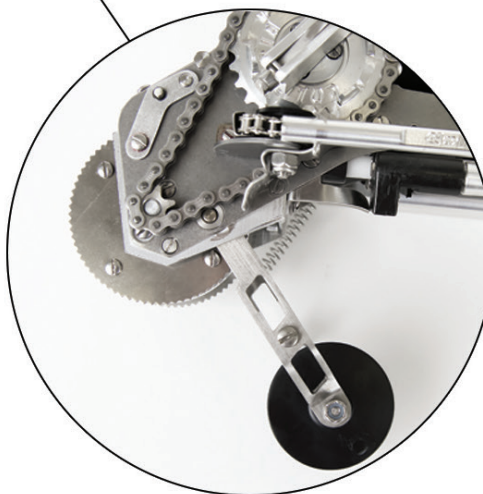
The diamond knurled
sleeve gives operator a
superb grip



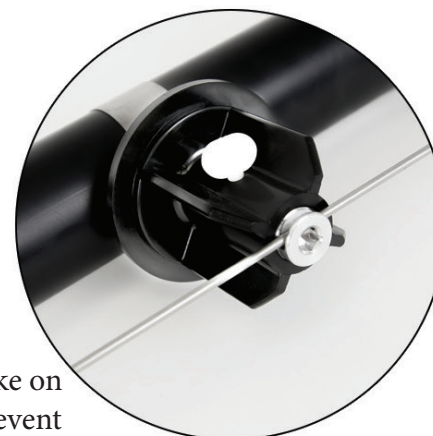
Ergonomic trigger
for the creaser
wheel



Buttons in the drum prevent
mud from
entering the
head.



We have added a brake on
the taper wheel to prevent
your tape from running to
quickly



CORNER COBRA

The Corner Cobra is an amazing time saving tool. It allows the user to roll out No-Coat™ and other structural corner beads at almost all inside and outside angles. We have heard back from users that it does it quicker and better, which to us, is a home run. Another one of our patented products that is changing the time it takes to finish a job.



CORNER ROLLERS

The slickest, most durable roller on the market!

Manufactured with a die-cast head and hardened stainless steel top rollers for long lasting angle work, no other roller can match it. These rollers are used, after the Taper, on 90° internal angle joints on walls and ceilings to embed the tape into angles in preparation for the Angle Heads.

The Columbia Corner Roller features split hardened steel/Delrin wheels designed to reduce drag on tape and overall tool weight.

Item No.	Description
CC	Corner Cobra
CR	Corner Roller



OUTSIDE CORNER ROLLERS

Offering three different profiles, Columbia Outside Corner Rollers will be sure to make your tape on bead setting job faster. Whether you're applying standard, bullnose or euro bead, our rollers make the job easier and help you achieve a great finish every time.

Item No.	Description
COBCR	Standard Outside Corner Roller
CBNCR	Bullnose Outside Corner Roller
COBCRE	European Outside Corner Roller



ANGLE HEADS

Columbia Angle Heads are the best money can buy! They professionally finish angles with the correct consistency of compound and the proper feathering of edges. Precision machined billet aluminum head and durable stainless steel wings ensure longer wear and performance.

Angle Heads are used in 90° internal angle joints after the Corner Roller to evenly feather compound over tape. All Angle Heads come with wheels.

Item No.	Description
2AH	2" Angle Head
2.5AH	2.5" Angle Head
3AH	3" Angle Head
3.5AH	3.5" Angle Head
AHA	Angle Head Adaptor



CORNER FLUSHER BOX

Our Corner Box is specially angled to access tight corners; its billet aluminum cone dispenses the proper amount of drywall compound smoothly and evenly. Paired together with our billet aluminum Angle Heads, our Corner Boxes are unbeatable. The durable aluminum cone design lasts a lifetime. It does not pit and rust through like other designs made from nickel plated mild steel. Our newly designed cone angle allows you to flush closer into the corners.

Billet handle
mount
will not crack
under pressure
like cast

Solid stainless
steel valve for
lifetime usage.
Will not leak
like other welded
thin wall designs

Thumb release
door stop for
quick clean



Item No.

Description

7CFB

7" Corner Flusher Box

8CFB

8" Corner Flusher Box



FLAT FINISHER BOX

This is one tough tool. Our flat boxes are considered by many as the best on the market; they are designed to perform day in and day out to finish your job smoothly and evenly.

Item No.	Description
5.5FFB	5.5" Flat Finisher Box
7FFB	7" Flat Finisher Box
8FFB	8" Flat Finisher Box
10FFB	10" Flat Finisher Box
12FFB	12" Flat Finisher Box
14 FFB	14" Flat Finisher Box

FAT BOY FLAT BOXES

Need a larger, stronger box with greater mud capacity for loading flats and butts? We are proud to meet your needs with our Fat Boy Boxes. Available in 8", 10" and 12" sizes, these boxes really go the extra mile. Fat Boys hold approximately 40% more compound than standard boxes, saving you many trips to the pump.



Hinged door system allows you to remove springs eliminating back pressure and keeping the door against the mud at all times

Item No.	Description
8FBB	8" Fat Boy Flat Box
10FBB	10" Fat Boy Flat Box
12FBB	12" Fat Boy Flat Box





AUTOMATIC FLAT BOXES

The Automatic Flat Boxes reduce the need to push the compound on to the wall. By engaging, the box springs put pressure on the compound chamber requiring only a light push to operate the box. Well-built and fine-tuned to offer great flat joints for years.

Item No.	Description
8FFBA	8" Automatic Flat Box
10FFBA	10" Automatic Flat Box
12FFBA	12" Automatic Flat Box
14FFBA	14" Automatic Flat Box
8FBBA	8" Automatic Fat Boy Box
10FBBA	10" Automatic Fat Boy Box
12FBBA	12" Automatic Fat Boy Box
8ITFB	8" Inside Track Fat Boy Box
10ITFB	10" Inside Track Fat Boy Box
12ITFB	12" Inside Track Fat Boy Box

INSIDE TRACK BOXES

The key advantage of having wheels inside the side plate is in running butt joints and navigating obstacles such as potlights and door jams. They key is having the wheels inside the coating path of the box blade.

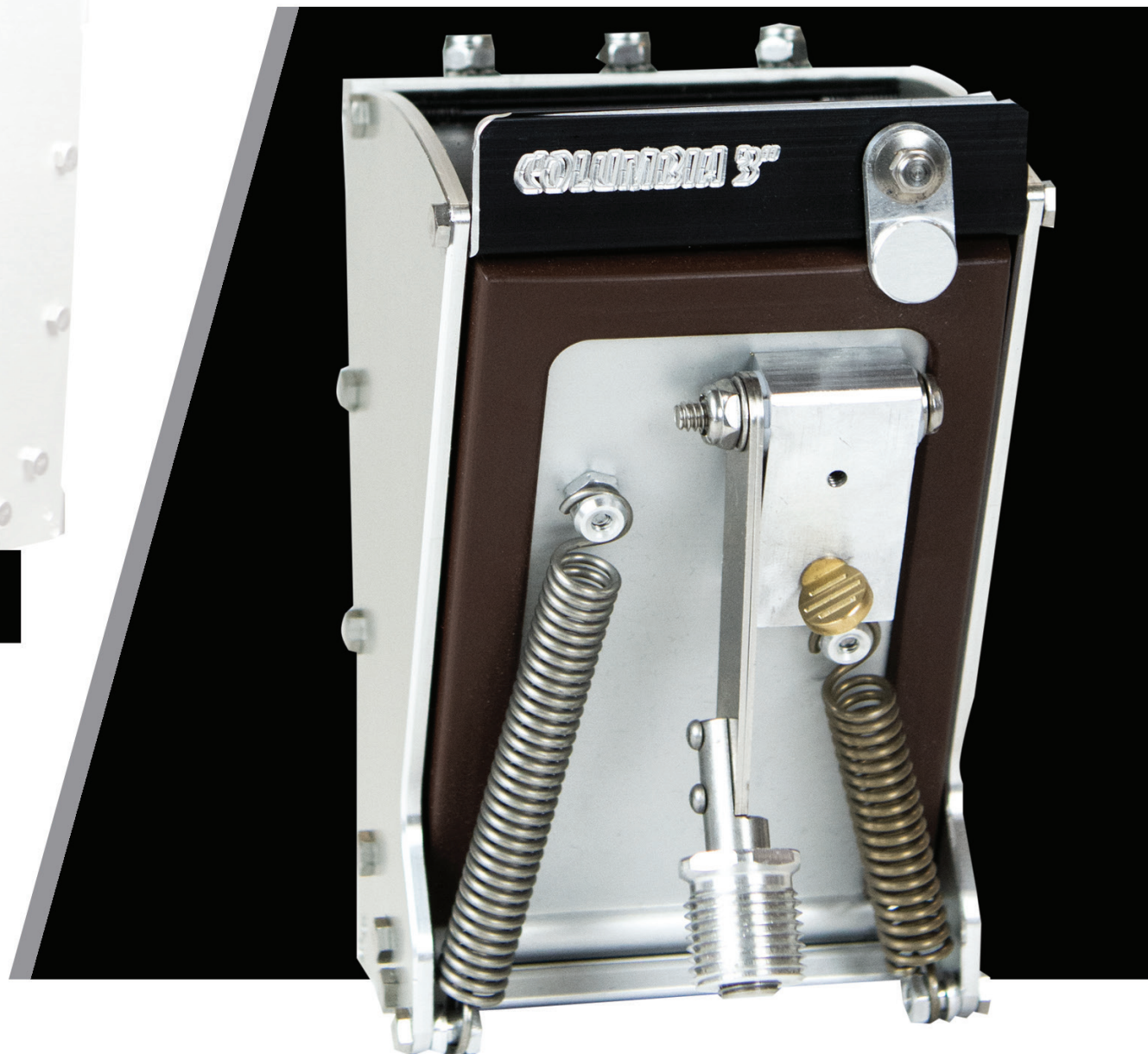
NAIL SPOTTERS

Our Nail Spotter has an extremely light weight and durable design. It's hinged door allows for easy access and cleaning, and the adjustable thumb tension screw allows for quick and easy adjustment of pivot tension.

Item No.	Description
2NS	2" Nail Spotter
3NS	3" Nail Spotter
HNSA-5-2	2" Wheel Conversion Kit
HNSA-5-3	3" Wheel Conversion Kit



GET SOCIAL:
@columbiatools





MUD PUMPS

Our Mud Pumps are built to exacting air-tight standards making them the easiest pump to prime. They're fabricated with an anodized aluminum cylinder, durable stainless steel shaft, a precision machined cast aluminum head and a tough solid billet aluminum leg.

The Tallboy is a mud pump that will allow you to stand upright while filling your tools. The extra height also allows for use in a 30 gallon pale for those who want to cut down on mixing time. Ergonomically superior, this pump saves the user physical stress and energy.



Item No.

Description

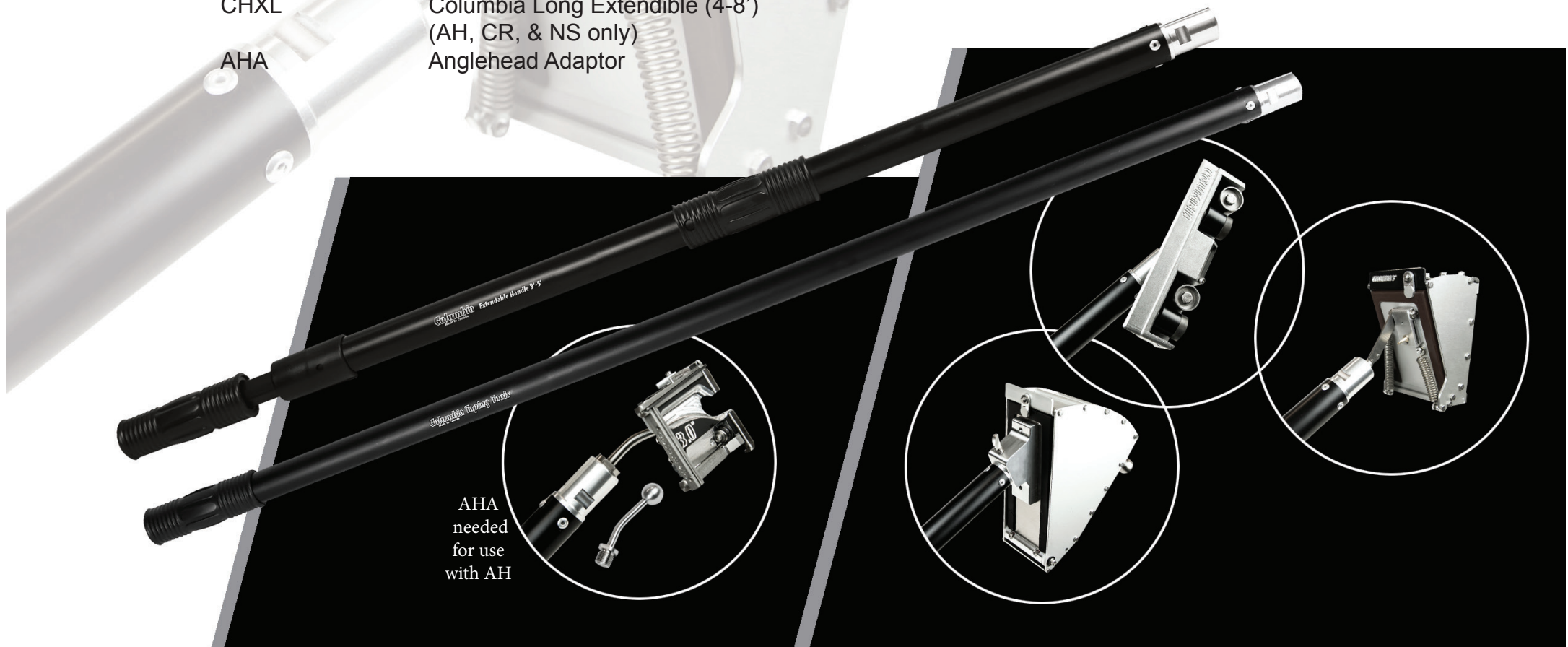
HMP	Hot Mud Pump
TBMP	Tall Boy Hot Mud Pump
HMP-C	Hot Mud Pump (CDN)
BF	Box Filler
TBBF	Tall Boy Box Filler
GN	Gooseneck
TBGN	Tall Boy Gooseneck

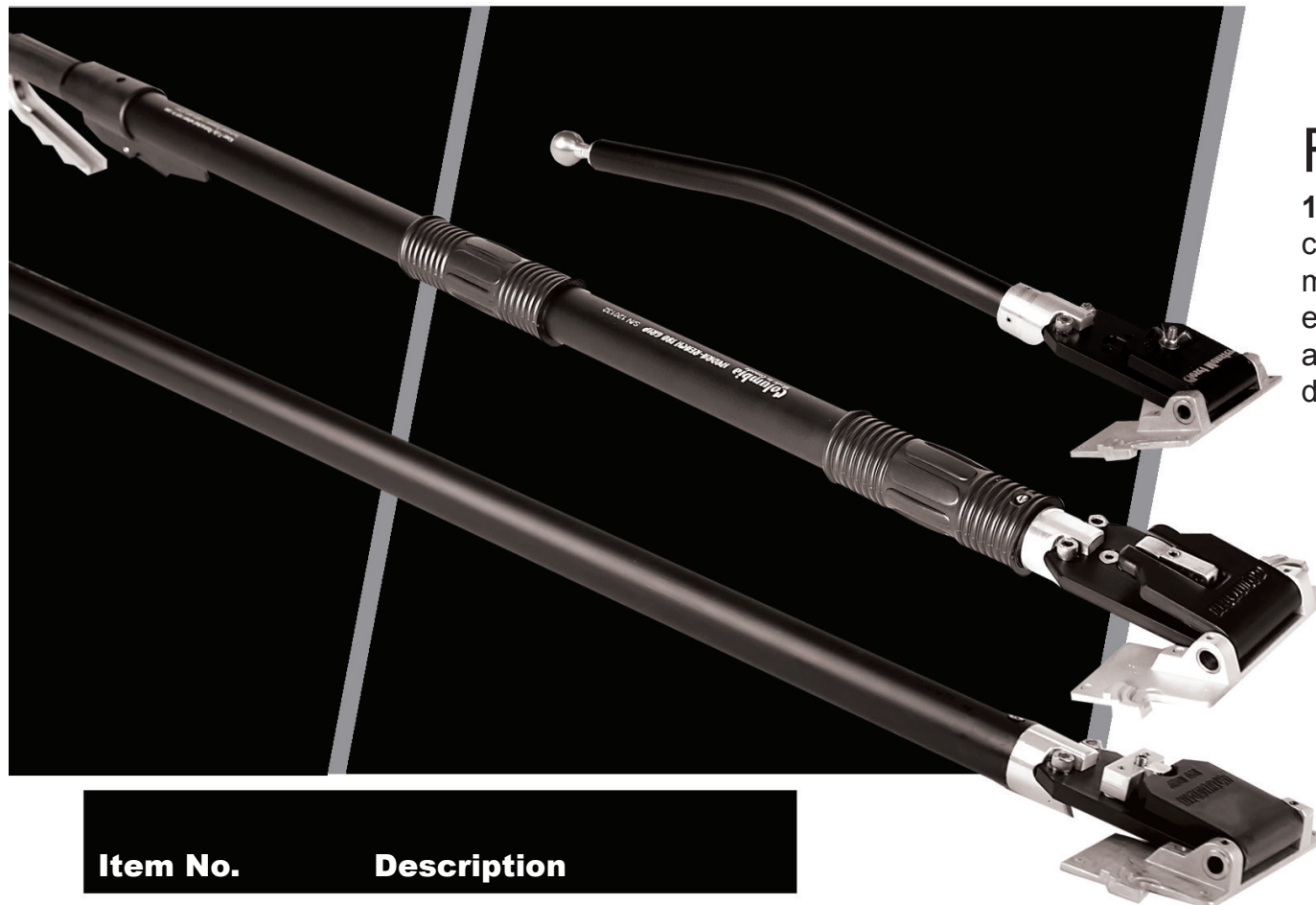
COLUMBIA ONE

The Columbia One Handle is designed to work with your Columbia products universally. From the Nailspotters and Angleheads, to the Rollers and the Corner Boxes, the One system allows you to lighten your load and still utilize all the finishing tools you love.



Item No.	Description
C1H	Columbia One Handle
C1HEXT	Columbia One Extendible (3-5')
CHXL	Columbia Long Extendible (4-8')
AHA	Anglehead Adaptor





FLAT BOX HANDLES

180° Grip Flat Box Handles allow for continuous braking over the entire range of motion - a complete 180 degrees. This ensures that you never lose your grip when adjusting your position. Extra strong aluminum design for years of rugged use.

The **Closet Monster** is especially useful for boxing tight areas where a longer handle will not fit. At approximately 19 inches in overall length this short handle is a great option for closets and other small spaces. An adjustable wingnut on the head allows you to fix the box at your desired angle.

Item No.	Description
3BH	3' 180° Grip Flat Box Handle
42BH	42" 180° Grip Flat Box Handle
4BH	4' 180° Grip Flat Box Handle
5BH	5' 180° Grip Flat Box Handle
6BH	6' 180° Grip Flat Box Handle
CMH	Closet Monster Flat Box Handle
EBH	Hydra Reach Box Handle 42"-63"
EBHL	XL Hydra Reach Box Handle 58"-80"

The Hydraulic Power Grip of the **Extendible Flat Box Handles** is a light touch system that allows you to achieve more pressure with less force. This entirely closed hydraulic system is clean and carefree - no mess and nothing to fill. The new design features a smaller reservoir that is out of the way, an easier to grip lever, a soft grip for more comfort and our new thumb-click.



SEMI AUTOMATIC TAPER

The Semi-Automatic Taper or “Bucket Taper” allows users to apply a specific amount of compound to a large volume of tape. It has a tape spool with brake to cut down on operator fatigue. Columbia’s Semi Automatic Taper is easy to use, durable and has laser engraved instruction on the door.

COMPOUND TUBES

Built to last, and hands down the smoothest and most durable tubes on the market. Expect quality with our Compound Tube and our Cam Lock Tube. Available sizes include 24”, 32”, 42” and 55”.

Item No.

Description

SAT Semi Automatic Taper

CMT24 24” Compound Tube

CMT32 32” Compound Tube

CMT42 42” Compound Tube

CMT55 55” Compound Tube

CLT24 24” Cam Lock Tube

CLT32 32” Cam Lock Tube

CLT42 42” Cam Lock Tube

CLT55 55” Cam Lock Tube



GET SOCIAL:
@columbiatools

Tape spool with
brake to
control
dispensing.

Stainless steel ball
and billet aluminum
head cone

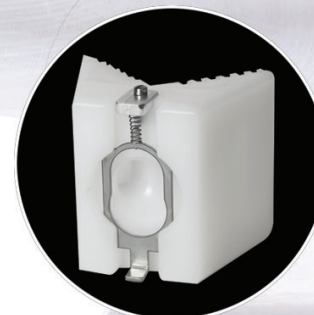




MUD APPLICATORS

These tools glide along the wall leaving the perfect amount of compound on flat surfaces. Machined from a solid piece of billet and then mounted with stainless runners, this tool is built to work.

Our new plastic applicators are a hit! Proportionate grooves give you a consistent mud distribution on the wall and speeds up the pre-filling process. Made out of UHMW, the strong durable design makes these Mud Heads the best on the market.



Item No.

Description

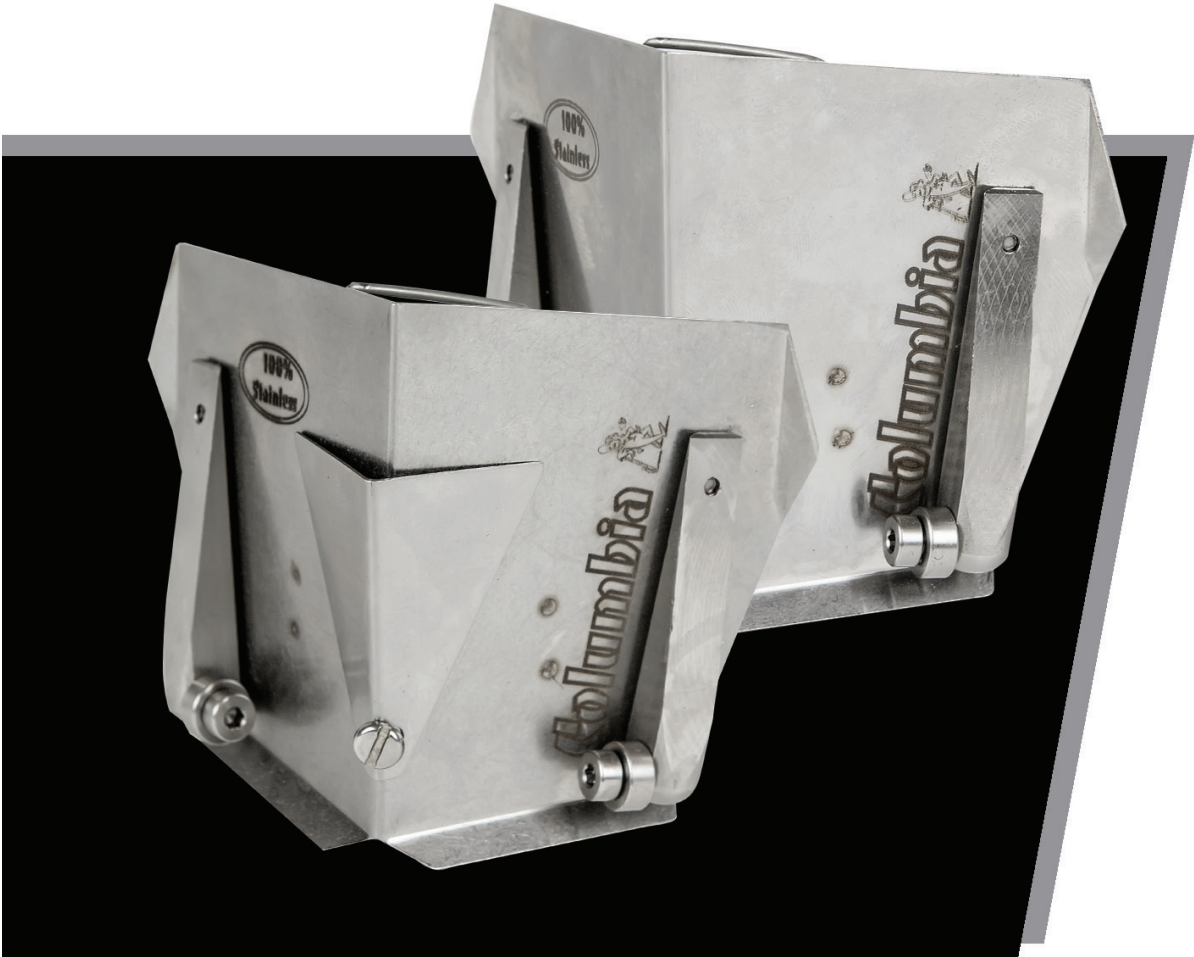
ICATW	Two-Way Internal Corner Applicator (4 Wheels)
ICA2-1	Inside Corner Applicator (2 Wheels) - 1"
ICA4-1	Inside Corner Applicator (4 Wheels) - 1"
CEXT90	External 90° Applicator
CFLT	Flat Applicator

FMH	L-Trim Applicator (Plastic)
IA90	Inside 90° Applicator (Plastic)
OA90	Outside 90° Applicator (Plastic)
OA90-325	Outside 90° 325 Applicator (Plastic)




CORNER FLUSHERS

Columbia Corner Flushers are widely known for being the best on the market. These Flushers have redefined angle finishing. They are built from the best materials, but above all, every single Flusher is hand ground and checked on a granite plate for perfection. Flushers come with wheels and an allen key for those who prefer not to use them.



Item No.	Description
2.5SF	2.5" Standard Flusher
3SF	3" Standard Flusher
3WTSF	3" Widetrack Standard Flusher
3.5SF	3.5" Standard Flusher
4SF	4" Standard Flusher
2.5DF	2.5" Direct Flusher
3DF	3" Direct Flusher
3WTSF	3" Widetrack Direct Flusher
3.5DF	3.5" Direct Flusher
4DF	4" Direct Flusher
2.5CSF	2.5" Combo Flusher
3CSF	3" Combo Flusher
3WTCSF	3" Widetrack Combo Flusher
3.5CSF	3.5" Combo Flusher



MAINTENANCE KITS

Columbia offers many kits to keep your tools working for you. Available in a convenient clam shell case for easy storage of parts, each kit has an accompanying video on Youtube and on the Columbia website to walk you through every step of installation. And as always, our experts are only a phone call or email away!

Item No.

Description

AHR-BK-2	Anglehead Blade Kit 2"
AHR-BK-2.5	Anglehead Blade Kit 2.5"
AHR-BK-3	Anglehead Blade Kit 3.5"
AHR-K	Anglehead Maintenance Kit
CC-RK	Corner Cobra Maintenance Kit
CRA-2	Corner Roller Wheel Kit
CTA-41	Cutter Block Assembly
CTR-1	Taper Maintenance Kit
CTR-2	Taper Head Maintenance Kit
CTR-42A	Taper Blades Kit
CTR-63	Taper Needles Kit
CTR-72	Taper Cables Kit
FFBA-36	Box Wheels Kit
FFBR-7-7A	Box Shoes Kit
FFBR-9-5.5	Box Blades Kit 5.5"
FFBR-9-7	Box Blades Kit 7"
FFBR-9-8	Box Blades Kit 8"
FFBR-9-10	Box Blades Kit 10"
FFBR-9-12	Box Blades Kit 12"
FFBR-9-14	Box Blades Kit 14"
HNSA-5-2	Nail Spotter Wheel Kit 2"
HNSA-5-3	Nail Spotter Wheel Kit 3"
HNS7-2	Nail Spotter Blade 2"
HNS7-3	Nail Spotter Blade 3"
HHR-1	Hydra Handle Maintenance Kit
MPR-1	Mud Pump Maintenance Kit



**SCAN THE QR CODE ON THE KIT!
INSTRUCTIONAL YOUTUBE VIDEOS
FOR EVERY MAINTENANCE KIT!!!**





MAKING TAPING TOOLS EASY

Columbia

Suite A - 19169 - 21st avenue
Surrey, British Columbia
V3Z 3M3
Canada

1.800.663.8121

support@columbiatools.com
techsupport@columbiatools.com

www.columbiatools.com
FB, YouTube, IG: @columbiatools



QUALITY.
VALUE.
INNOVATION.